

The Reigate and Banstead Partnership

Purpose, Governance and Operational arrangements for the Thematic Partnership Groups

Wider structural arrangements

The Reigate and Banstead partnership has agreed to adopt a three-tier governance structure (figure 1.1)

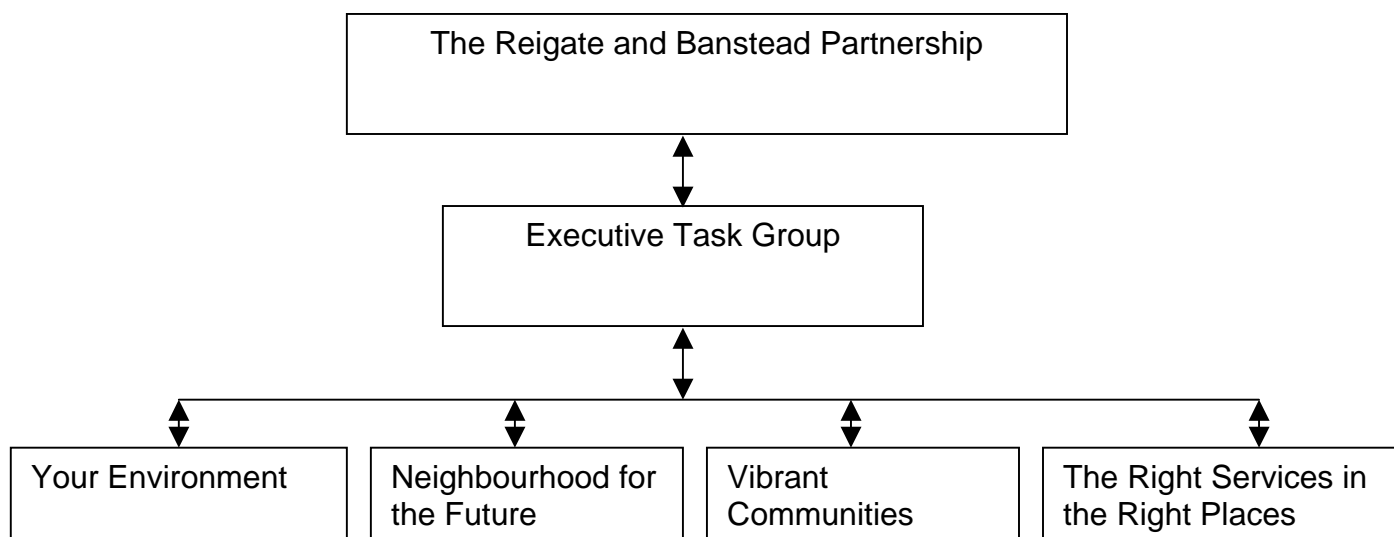


Figure 1.1

The purpose, governance and operational arrangements for the upper two tiers are set out in a separate document

Thematic Partnership Groups

Role:

- To agree, plan and deliver projects that will help achieve the priorities as set out with the Community Plan.
- Seek and secure resources in support of project implementation.
- Clearly identify lead partners and project plans to support timely action-oriented implementation
- Provide regular updates to The Reigate and Banstead Partnership on project progress (financial and performance management).

An organisation from The Reigate and Banstead Partnership would provide leadership and administrative support for each of the Thematic Partnership Groups

It may be necessary / appropriate to set up time limited Thematic Partnership Task groups to meet the needs of specific project requirements. The lead agency would be responsible for this process.

Membership and meetings:

- Comprising elected representatives and operational managers from the public sector (local authorities, local agencies, etc.), business, the independent sector and local stakeholders.
- No more than 10 - 15 members per Thematic Partnership Group to support an action-oriented focus.
- Meet approximately every 6 weeks, dependent on need generated by actions / projects.
- Thematic Partnership Chairman to take the lead in ensuring complementary / appropriate linkages with other Thematic Working Groups and the Marketing and Communications Working Group.

Proposed role and membership of each of the 4 Thematic Partnership Groups:

It is important for all partners to be clear what is in and out of scope of each of the thematic working groups. This document sets out proposed key responsibilities of each of the groups, the draft terms of reference (Appendix 1) and provides details of what will be in and out of scope of each of the groups (Appendix 2), in particular where issues touch on local authority statutory responsibilities. In addition, there may be occasions where projects need to be handed from one Thematic Partnership Group to another to take forward.

Your Environment – Priorities

Green Spaces Are Your Places – encouraging us all to use, enjoy and protect the Borough's countryside, open spaces and parks

- Improve access to the local countryside and green spaces so that everyone has the opportunity to use these places for leisure, learning, and enjoyment.
- Encourage involvement in environmental education and conservation projects.
- Increase pride and interest in our unique local heritage and places of interest.
- Design wildlife habitats into new developments so that the natural environment is more diverse than today.
- Continue to protect the very best examples of landscape character and built heritage so that the Borough maintains its unique identity.

- Combine locally distinctive building materials with advances in new technology to enable a truly distinctive and sustainable local environment for future generations.

Waste not Want Not – Everyone is recycling and managing waste to reduce the need for landfill sites and improve our Borough

- Encourage everyone to reduce the amount of waste they produce.
- Increase the re-use of materials where possible
- Create a positive, proactive and practical approach to recycling in our Borough.
- Increase pride in our local surroundings and environment.

Getting Around, Options Abound – making it easier and safer for everyone to travel around the Borough

- Increase access to public places and services for all
- Encourage more travel on foot and by bicycle to improve our health, get us out in the community and reduce our car dependency.
- Develop School Travel Plans so that every pupil can travel to school easily and safely.
- Encourage intelligent public transport systems across the area to create wider joined up, transport networks that reduce car usage.
- Develop options for smarter travel to work by working with local employers to help them reduce their workforces' reliance on cars.

An Environment for the Future – leading more sustainable lifestyles to future proof our Borough

- Encourage sustainable lifestyles so that we all “live within our means”.
- Help everyone to take responsibility for conserving water and energy.
- Reduce the Borough's impact on climate change by promoting zero and low carbon development in new and adapted buildings.
- Promote effective renewable energy sources to help combat climate change.

- Increase the efficiency of existing buildings to reduce the amount of water and energy wasted.
- Reduce pollution in the Borough to improve the quality of our environment.

Potential membership

SCC
RBBC
Raven Housing Trust
Surrey Police
Surrey PCT
Horley Town Council
Salfords and Sidlow Council
Reigate and Banstead Youth Council
Reigate and Banstead CVS

Neighbourhoods for the Future– Priorities

Realising our Potential – Improving Redhill, Horley, Preston and Merstham to meet the current and future needs of local people

- Revitalise Redhill Town Centre through the development of key sites and improved transport links, which encompass new public spaces, and integrated housing, leisure and shopping facilities.
- Regenerate Horley Town Centre through high quality residential, commercial and community developments to secure its future viability and vitality.
- Work in partnership and engage local people to change the social and physical environment of Preston to improve their quality of life.
- Join up public and voluntary sector services in Merstham through the creation of new community facilities that improve local opportunities.
- Maximise opportunities arising from the New Growth Points projects to make improvement to transport networks, energy supplies, and water efficiency to support regeneration priority areas.

Home Time – working to develop homes to suit the changing needs of the borough population

- Ensure that neighbourhoods are sustainable for the future by promoting the right mix of homes in locations that have access to transport routes, local services and facilities.
- Work in partnership to increase the number and range of affordable housing options available to key workers, people on low and moderate incomes, and young people so that our residents have the opportunity of an affordable home of their own.
- Improve and maintain the condition of homes in the Borough to give everyone the opportunity to have a decent and safe home.
- Improve the ability of vulnerable people to live independently and safely at home.

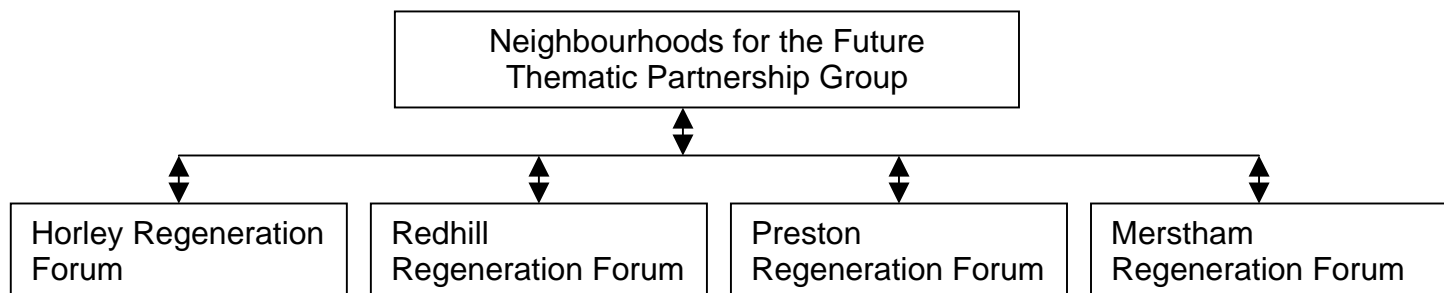
At the Heart of the Community – ensuring that services and facilities respond to the needs of the local neighbourhood

- Increase the number of shared community facilities such as health care and libraries so they are easy to access.
- Improve transport links between key services across the borough so that we can all access community based services.
- Encourage the development of voluntary and community organisations so that they are able to provide a range of services and projects to meet the diverse needs of our population.
- Support schools and colleges to develop into community resources that have services, activities and facilities available for use by students and the local community.
- Support the on-going viability of town centres and local shopping parades that contribute to the character and vitality of neighbourhoods especially in the north of the Borough.

Potential membership

SCC
RBBC
Raven Housing Trust
Surrey Police
Surrey PCT
Horley Town Council
Salfords and Sidlow Council
Reigate and Banstead Youth Council
Reigate and Banstead CVS

Recognising the significant scope of potential activity within this theme that New Growth Points funding might support it is accepted that the work of the Thematic Partnership Groups would be supported by four geographically focussed For a.



Vibrant Communities – Priorities

Safe and Sound – continuing to make the Borough a safe place to live in, work in and visit

- Increase the number of people who feel safe in the Borough by working in partnership with communities and other agencies.
- Break the cycle of offending by helping convicted lawbreakers make a positive contribution to the community.
- Establish and support neighbourhood policing so that communities can work in partnership with the police and others to identify local crime priorities.
- Continue work in partnership to reduce anti-social behaviour and ensure the safety of children and young people.
- Improve road safety for all users.
- Effectively tackle domestic violence so that everyone feels safe at home.

Learning for Life – promoting learning opportunities to improve our lives

- Promote and develop opportunities to improve early years learning so that we unlock our children’s potential.
- Create a culture of lifelong learning to encourage everyone to take up new learning and skills development opportunities throughout their lives.

- Work in partnership to reduce the literacy, numeracy and life skills gap experienced by some of the people in our community.
- Work in partnership with educational institutions and businesses to improve the work-based skills of our existing and future work force to ensure we maximise economic performance.

Zest for Life – everyone has the opportunity to enjoy healthy and active lifestyles

- Promote the health benefits of healthy eating and an active lifestyle to reduce obesity and other health related issues.
- Reduce smoking, drug and alcohol abuse to improve our long-term health.
- Encourage activities that promote good mental health.
- Encourage participation in local cultural, leisure and sports groups to develop new skills, interest and social networks.
- Ensure that everyone can access health and social care information so they can make informed health and lifestyle choices.

It's Your Community – everyone working together to create strong and inclusive communities

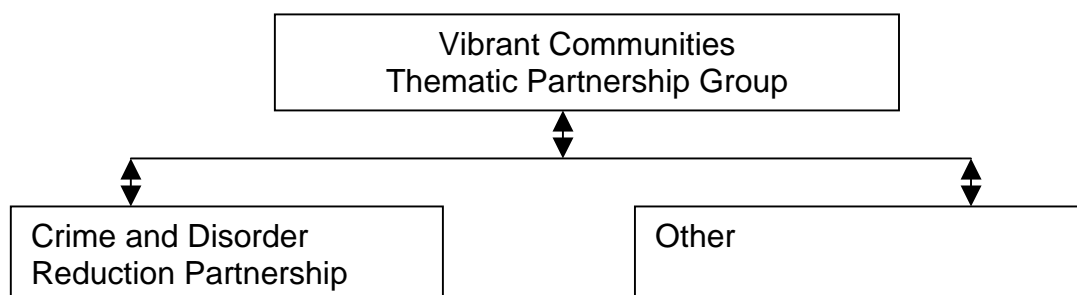
- Take pride in diversity within our communities and ensure we respond to the needs of the black and ethnic minority communities and faith communities.
- Strengthen neighbourliness in our communities to increase everyone's sense of local responsibility and community pride.
- Work in partnership to expand opportunities for us to take part in high quality volunteering and learning opportunities.
- Improve facilities and options for young people so that the right activities and resources can be provided to help them take part in their community.
- Increase our use and support of community venues such as village halls so that they remain viable and vibrant.

Potential membership

SCC
RBBC

Raven Housing Trust
Surrey Police
Surrey PCT
Horley Town Council
Salfords and Sidlow Council
Reigate and Banstead Youth Council
Reigate and Banstead CVS

Recognising the broad range activity in which the Thematic Partnership Group may wish to engage, and the statutory role of the Crime and Disorder Reduction Partnership, it is suggested that two separate sub groups take forward distinct elements within this priority area.



The Right Service in the Right Places – Priorities

Future Proofing our Services – ensuring our services are well planned and responsive enough to stand the test of time

- Adopt a coordinated approach to planning services and sharing information so that high quality services can continue to be delivered in the face of increasing cost pressures.
- Continue to liaise and engage with neighbourhoods to identify local issues to inform service planning and bring about shared problem solving.
- Involve our customers in service design and delivery to ensure we are responding to and meeting their needs.
- Combine resources to deliver joined up services that are streamlined and coordinated and respond to the needs of users.
- Adopt a flexible approach to the way we provide and carry out services to reflect future needs.

Accessible Services – improve access for service users

- Improve the network of public services buildings so that they are physically accessible and co-located where possible to make them easier to use.
- Continue to develop electronic services that allow greater access to public service organisations at a time that is convenient.
- Work in partnership to deliver high quality services that target the people who need them most and address underlying issues that affect people's quality of life.

Stay Informed – helping everyone to make informed decisions about services

- Help people to understand the range of options and services that are available to them.
- Improve the way we communicate with people who live, work or visit the Borough.
- Work to make the democratic process simple to access, easy to understand and engaging to increase interest and participation in local decision making.
- Encourage everyone to make informed decisions and take personal responsibility for their actions.

Potential membership

SCC
RBBC
Raven Housing Trust
Surrey Police
Surrey PCT
Horley Town Council
Salfords and Sidlow Council
Reigate and Banstead Youth Council
Reigate and Banstead CVS
Reigate and Banstead Access Forum